

The Importance of Surface Preparation

A poorly prepared substrate increases the chances of a coating failing, peeling, or breaking because it cannot effectively adhere.

Shortcuts in the installation process compromise the integrity of the entire flooring system, increase safety risks, and add areas of potential contamination. This can be avoided by simply preparing the substrate properly.

At MSC Floors, we pride ourselves on the importance of preparation. We call ourselves a “prep company that does great installs.” It reminds us that without properly prepared substrates, every floor coating system will fail.

Our time-tested preparation and installation processes helped us jump to the top of a list of leading installers recommended by our product suppliers.

Fortune 500 giants regularly contract our crews because of proven techniques and our flooring systems’ long-term performance.



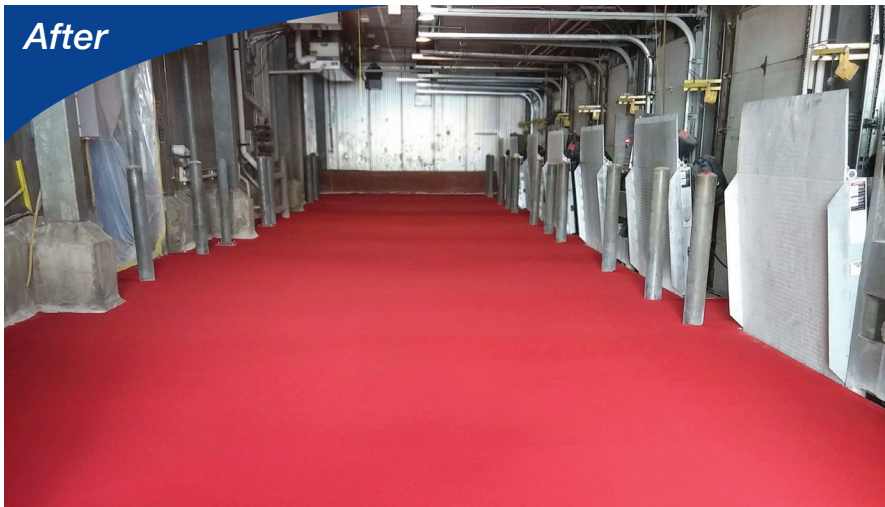
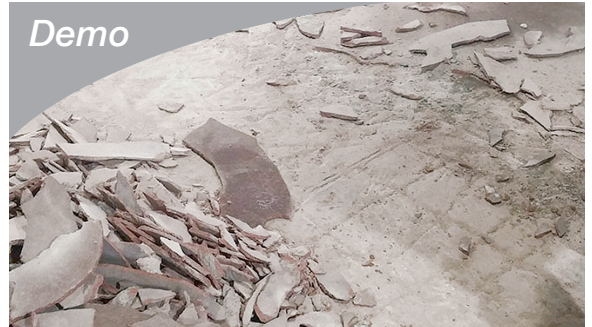
SCARIFICATION IN THE CONCRETE
ALLOWS FOR A SECURE BOND BETWEEN
THE COATING AND SUBSTRATE



www.mscfloors.com

5407 Gratiot Avenue, Saint Clair, MI 48079
Main (810) 966-2402 | Fax (810) 985-6700

Case Study



National food production and packaging company turns to MSC to replace a poorly installed floor that is failing

When a national food and packaging company reached out to MSC Floors for help, we responded. They had a floor system installed by a company whose substrate wasn't prepared properly. It was failing - and creating safety issues that needed immediate attention. To ensure the quality of their product and the safety of their employees, we did a full demo of the floor, scarified and chip hammered the substrate, then installed a urethane mortar floor system. This system delivers a high-performing solution capable of handling extreme environments, frequent thermal cycling, heavy wear, and corrosive cleaning agents.

The client was so pleased with the final product, they have since had us address several other areas of their facilities.

Project Brief

- **Scarification and chipping hammers (hilti)** with dust containment to remove the existing urethane mortar and prep the surface
- **Install termination keycuts** to the perimeter of all equipment, drains and at all transition areas
- **Install seamless urethane mortar system (RED)** .375" thickness to the floor surface
- **Broadcast ceramic color quartz** to rejection for a heavy textured surface
- **This is a USDA and FDA specified floor system** and the best option for their flooring needs



www.mscfloors.com

5407 Gratiot Avenue, Saint Clair, MI 48079
Main (810) 966-2402 | Fax (810) 985-6700