



MICHIGAN SPECIALTY COATINGS 5407 GRATIOT AVENUE SAINT CLAIR, MICHIGAN 48079 USA

WWW.MSCFLOORS.COM 866-45EPOXY

# **MSC**

MICHIGAN SPECIALTY COATINGS



*Level A*



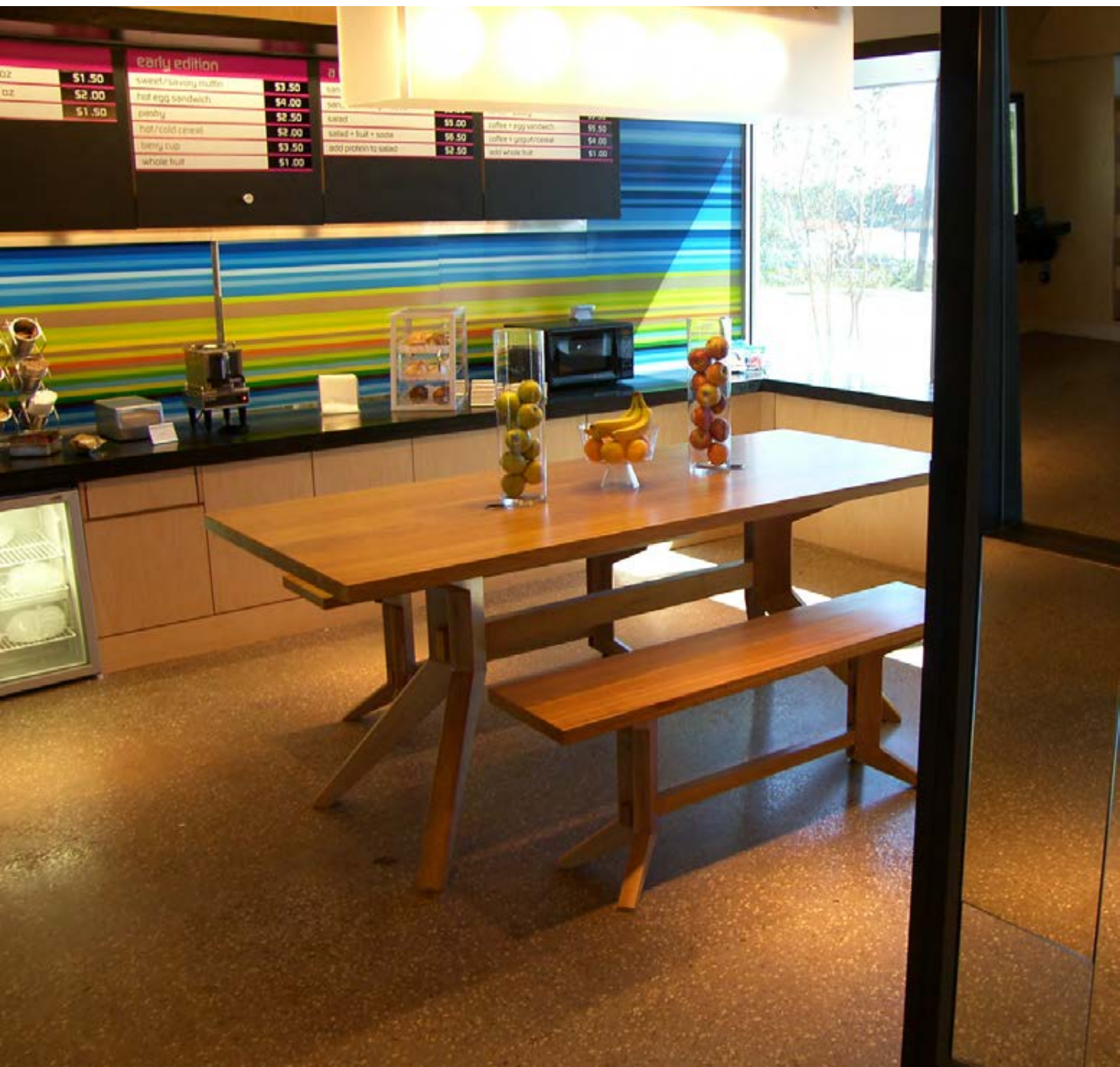


*Level A, Heavy Aggregate, Colored, Office*



*Level A, Cream, Natural, Retail, New*





*Level A, Heavy Aggregate, Colored, Hotel Lobby Restaurant*





*Level A, Cream, Stain, Educational*





*Polished Concrete With Line Striping*

# **MSC**

MICHIGAN SPECIALTY COATINGS



*Level B*





Before And After





*Level B, Cream, Natural Color, Auto Repair, 5 Years*





*Level B, Cream, Natural Color, Retail, 7+ Years Old*





*Level B, Cream, 2 Tone Stain, Retail*



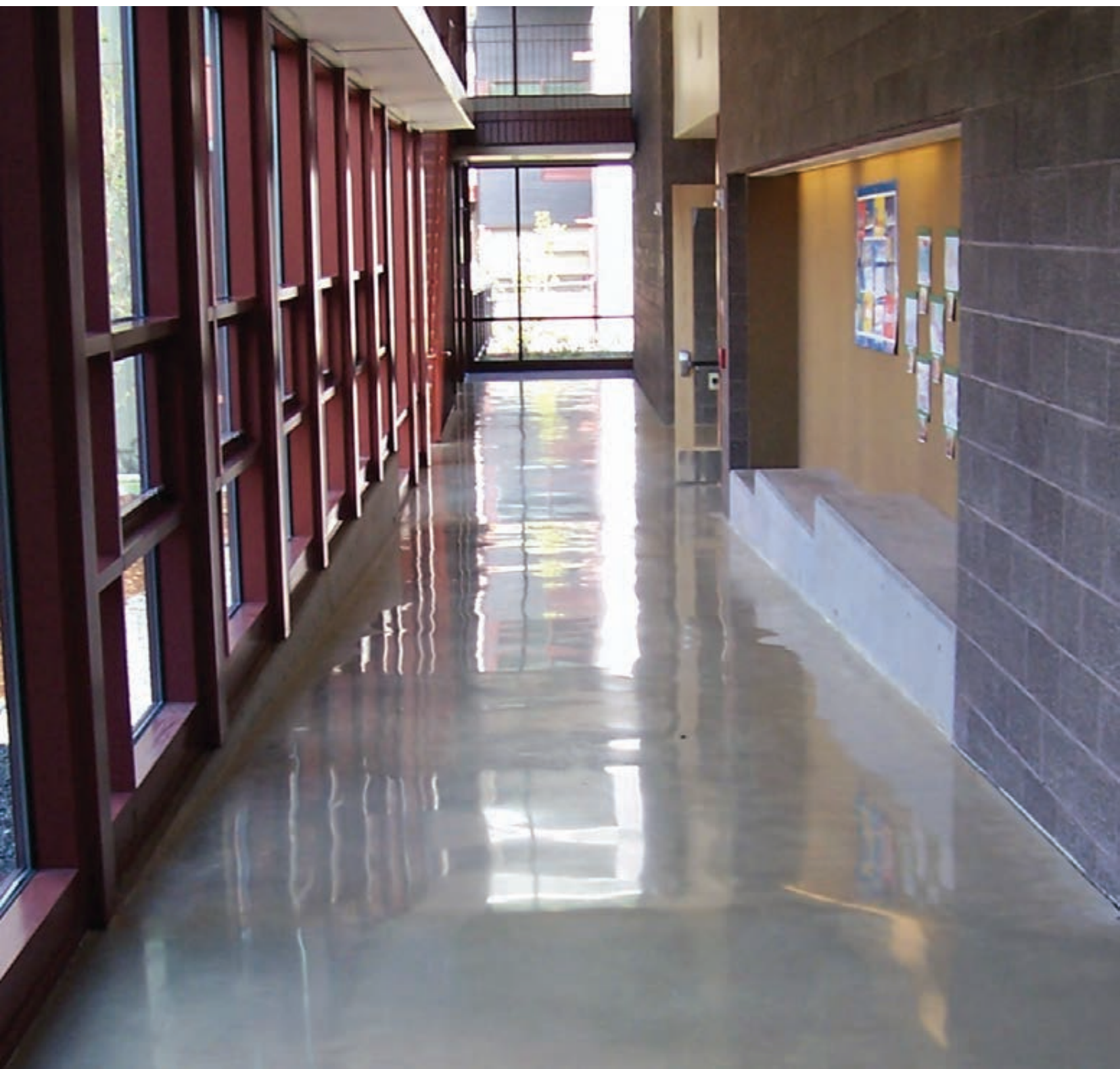


*Level B, Cream, Chocolate Brown & Burnt Sienna Dye, Church*





*Level B, Cream, Natural Color, Auto Repair, 3 Years Old*



*Level B, Cream, Dry Shake-On Hardener, Natural Color, Educational, 7 Years Old*





*Level B, Cream, Colored, Acid Stain, Grocery, 6+ Years Old*





*Level B, Cream, Natural Color, Parts Warehouse, 6 Years Old*





*Level B, Cream, Natural Color, Retail, 5 Years Old*



*Level B, Cream, Natural Color, Retail, 3 Years Old*





*Level B, Cream, Natural Color, Convention Center*



*Level B, Cream, Natural, Aviation Repair Shop, 4+ Years Old*





*Level B, Cream, Stain, 2 Tone, Grocery*



*Level B, Cream, Stain, Multi-Color, Educational, 2 Years Old*





*Level B, Cream, Natural Color, Manufacturing*



*Level B, Heavy Aggregate, Integral Color, Hotel*





*Level B, Heavy Aggregate, Natural Color, Hardware Store, 3 Years Old*





*Level B, Light Aggregate, Natural Color, Retail, 6+ Years Old*





*Level B, Light Aggregate, Natural Color, Correctional Facility, 5+ Years Old*



*Level B, Medium Aggregate, Natural Color, Educational*





*Level B, Medium Aggregate, Natural Color, Fire Station*



*Level B, Medium Aggregate, Natural Color, Office, 9+ Years Old*





*Level B, Medium Aggregate, Integral Color, Church, 8 Years Old*



*Level B, Cream, Gray Color, Hospital, 3 Years Old*





*Level B, Medium Aggregate, Natural Color, Educational*



*Level B, Medium Aggregate, Natural Color, Educational*





*Level B, Medium Aggregate, Stained, Restaurant, 4+ Years Old*



*Level B, Salt & Pepper Aggregate, Dry Shake-On Hardener, Natural Color, Educational, 6+ Years Old*





*Level B, Salt & Pepper Aggregate, Natural Color, Retail, 3+ Years*





*The Process and the Finished Product*

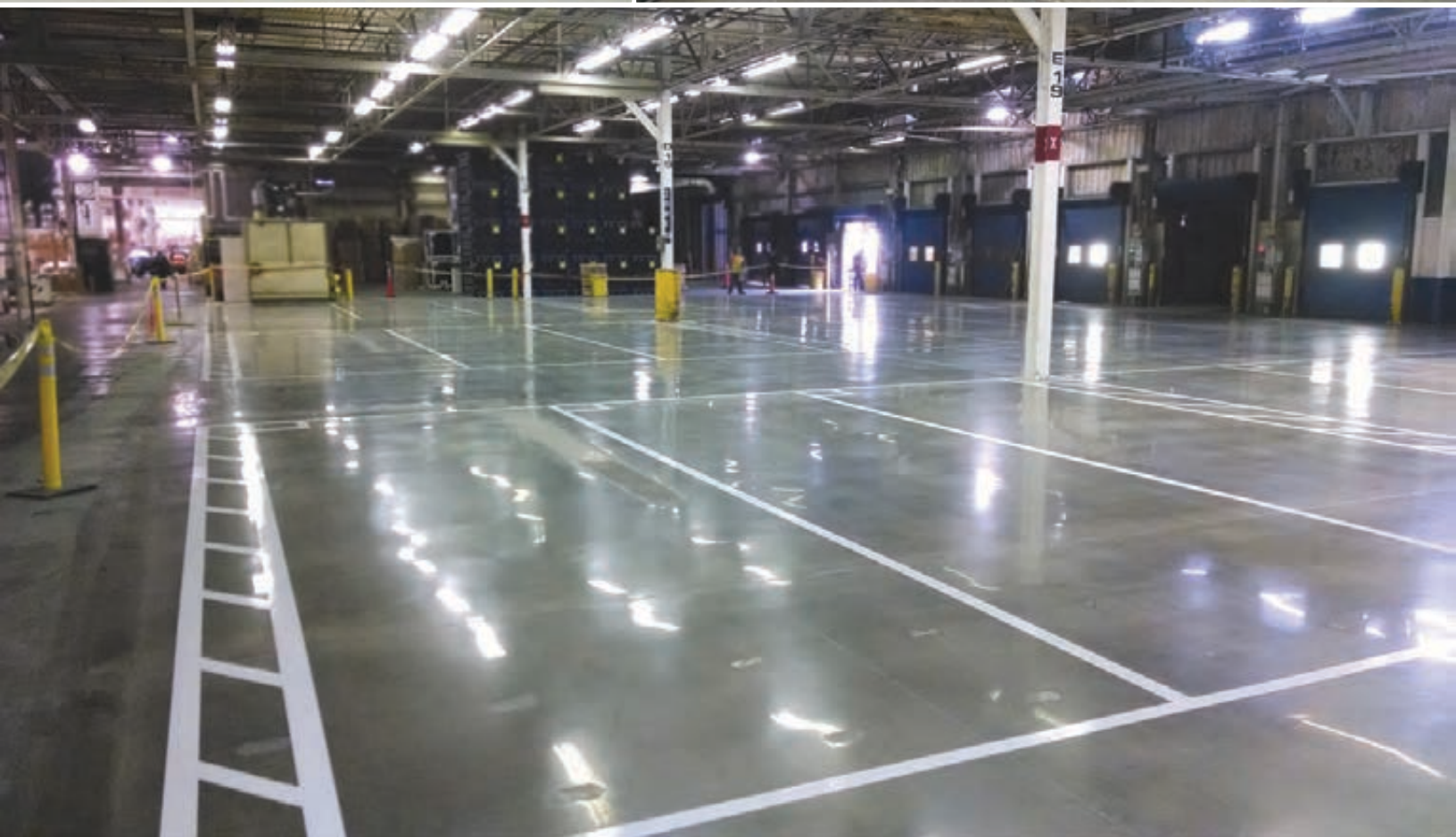


# **MSC**

MICHIGAN SPECIALTY COATINGS



*Level C*



#### BRIEF PROJECT OUTLINE

- > SASE GRIND THE FLOOR SURFACE WITH A 16 GRIT METAL DIAMOND TO REMOVE THE 17,000 SQ/FT OF EXISTING 1/8" EPOXY COATING DOWN TO THE BARE CONCRETE SURFACE
- > SASE GRIND THE 58,000 SQ/FT OF CONCRETE FLOOR AREA WITH A 30 GRIT METAL DIAMOND
  - > GRIND THE CONCRETE WITH A 70 GRIT METAL DIAMOND
- > PATCH ALL LARGE HOLES IN THE SURFACE AND FILL ALL JOINTS WITH SEMI RIGID JOINT FILLER
  - > WASH THE FLOOR AND PREPARE FOR RESIN BOND DIAMONDS
- > HONE THE FLOOR WITH A 100 GRIT RESIN DIAMOND FOLLOWED BY A 200 GRIT RESIN DIAMOND
- > CLEAN THE FLOOR ONCE AGAIN AND APPLY RETRO-PLATE DENSIFIER TO ENTIRE SURFACE
  - > HONE THE FLOOR WITH A 400 GRIT RESIN DIAMOND
- > POLISH THE FLOOR WITH A 800 GRIT RESIN DIAMOND TO ACHIEVE A GLOSS SHEEN
  - > INSTALL 6,000 LINEAR FEET OF 4" WHITE LINE STRIPES





*Level C, Cream, 2 Tone Stain Color, Manufacturing, 3+ Years Old*





*Level C, Cream, Multi-Color Stain, Retail, 4+ Years Old*



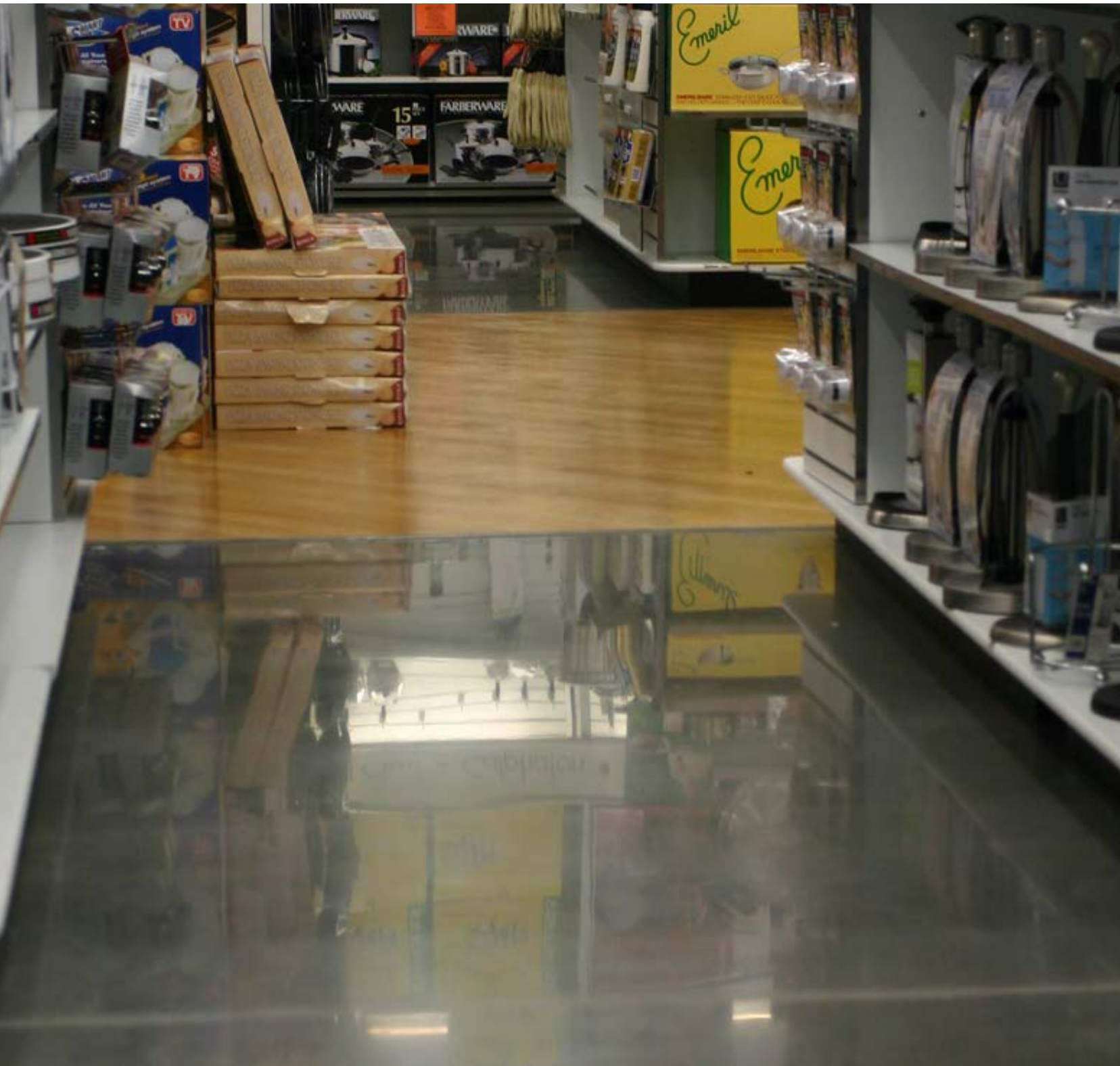


*Level C, Cream, Multi-Color Stain, Restaurant, 4+ Years Old*



*Level C, Light Aggregate, Colored, Manufacturing, 3+ Years Old*





*Level C, Cream, Natural Color, Retail, 6+ Years Old*



*Level C, Cream, Natural Color, Warehouse*





*Level C, Heavy Aggregate, Dye, Airplane Hangar, 5+ Years Old*



*Level C, Heavy Aggregate, Dye, Airplane Hangar, 5+ Years Old*





*Level C, Light Aggregate, Stain, Office*



*Level C, Cream, Stain, Warehouse, 4 Years Old*





*Level C, Medium to Heavy Aggregate, Natural & Stain, Office*



*Level C, Medium to Heavy Aggregate, Black Dye, Educational*



Through a patented process of diamond grinding, concrete polishing and densification through the specifically formulated RetroPlate® densifier, the RetroPlate® Concrete Polishing System transforms concrete into surfaces of permanent strength, beauty and longevity. The RetroPlate® Concrete Polishing System is truly a "green" total flooring solution, and the natural answer for your flooring needs.

Since 1996, this process has been transforming new and old concrete into strong, durable and beautiful surfaces. RetroPlate® will enhance industrial, retail or commercial concrete floors, while eliminating the ongoing costs of coatings and floor covering failures.



In 2006, the RetroPlate® System was named one of the *Top-10 Green Building Products* by **GreenSpec** and **Environmental Building News**.

The RetroPlate® system reduces negative impact during construction and demolition, contains no VOCs, is durable and low maintenance and can reduce light level requirements by 30%.

The RetroPlate® System is also a LEED point contributor and has been used on Silver, Gold and Platinum LEED Projects. Most notably, it was selected to finish the main-level, multi-purpose space of the **University of Calgary's Child Development Center**, which received one of the highest LEED ratings at the time.



- > INDUSTRIAL COATINGS
- > RESINOUS FLOORING
- > POLISHED CONCRETE

**MICHIGAN SPECIALTY COATINGS**  
6407 GRATIOT AVENUE  
SAINT CLAIR, MICHIGAN 48089 USA

**WWW.MSCFLOORS.COM**  
**PHONE - 1-866-45-EPOXY**  
**FAX- 810-985-6700**